

D Marina

U.A.E.



AL SEEF



BUSINESS BAY



JADDAF WATERFRONT



MARSA AL ARAB

ENRICH YOUR  
YACHTING  
*experience*



**AL SEEF**  
alseef@d-marin.com | +971 50 211 7601

**BUSINESS BAY**  
businessbay@d-marin.com | +971 54 582 8076

**JADDAF WATERFRONT**  
jaddafwaterfront@d-marin.com | +971 56 414 1933

**MARSA AL ARAB**  
marsaalrab@d-marin.com | +971 55 531 0071



# Marsa Al Arab

*Nestled at the tip of a peninsula in the heart of Dubai's private beach, Marsa Al Arab is an ultra-luxurious destination that boasts a stunning resort, marina, and marina villas.*

D-Marin Marsa Al Arab marina offers 82 berths for yachts up to 61 meters in length with stunning views of Dubai's most famous landmarks, including Burj Al Arab Jumeirah.

The marina is designed to cater to yacht owners who seek a luxurious and private marina in a lifestyle destination with direct access to the open sea.



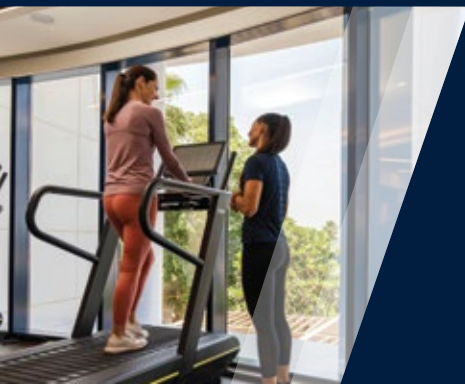


## Things To Do & Facilities

The resort at Marsa Al Arab will complete Jumeirah's oceanic trilogy, which includes the wave-shaped Jumeirah Beach Hotel and sailboat-inspired Burj Al Arab Jumeirah. Its avant-garde superyacht design, unmatched experiential connectivity and innovative dining experiences will charter a new era for luxury hospitality.

### J Club Membership

Step into J Club and discover a new world of personalized health and wellness services enhanced by outstanding Jumeirah dining and leisure experiences. The ultimate membership for your lifestyle lets you choose from different locations and tailored benefits, unlocking everything you need to live life well. Increase your energy with invigorating workouts, awaken your senses at award-winning spas, or relax by pristine beaches before a swim in our private pools. You can also enjoy added privileges, such as family waterpark access, preferential pricing from expert sports coaches, and delicious dining discounts across the city.



### MUST-SEE

#### Kite Beach

Kite Beach is one of Dubai's most popular beaches - perfect for sun-seekers, foodies and sports enthusiasts alike. If you're serious about watersports and want to test your skills on one of the best free beaches in Dubai, Kite Beach has plenty of challenges. Located just off the Jumeirah neighbourhood, this beachfront exudes adrenaline as much as it does serenity and a casual atmosphere.

#### Madinat Jumeirah

Inspired by an Arabian citadel, Madinat Jumeirah is a mini-city in Dubai, comprising five-star hotels, ornate souks and beachfront hotspots. A destination within a destination, you'll find several grand hotels, including Jumeirah Al Qasr, Jumeirah Mina A'Salam and Jumeirah Al Naseem, alongside a cluster of traditional summerhouses at Jumeirah Dar Al Masyaf and seven grand homes at Jumeirah Malakiya Villas.

There is an entire river system, five kilometres in length, complete with its own fleet of traditional abra boats. You can take a tour around the whole property on one of these in-house abras and stop by along the way.

There are more than 50 different restaurants, nightspots and lounges at your disposal across its 40 hectares. Whatever your taste, there is something to satisfy your culinary cravings here.

# Capacities & Services

### GENERAL SERVICES

- 24/7 Sailing permit arrangements
- 24/7 Dockhand assistance
- 24/7 Buggy transfer
- 24/7 Navigation warning updates
- 24/7 Free Wi-Fi
- Ice delivery
- Ample car parking
- Waste collection & disposal

### BERTHING

- 82 Berths for yachts up to 61 m
- 4 m draft

### TECHNICAL SERVICES

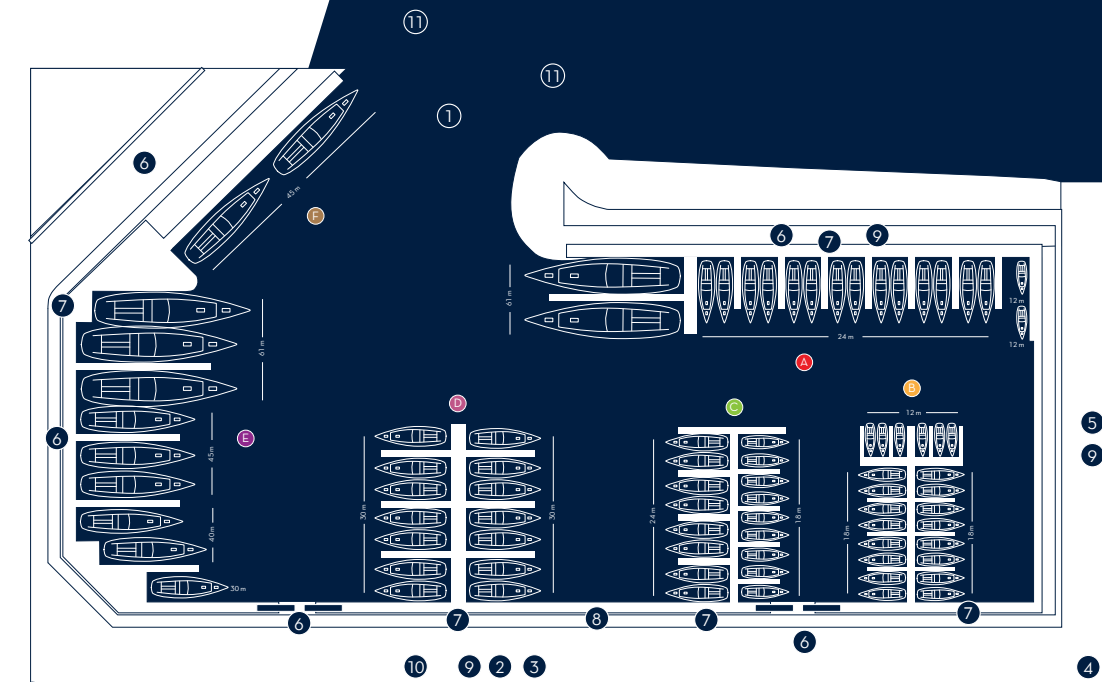
- Black & grey water pump-out
- From 16 Amp single phase to 400 Amp three phase

### SECURITY SERVICES

- 24/7 Security & CCTV monitoring solutions



- 1 Access to Open Sea
- 2 Marina Office
- 3 Retail Stores
- 4 Entrance/Exit Marina Access
- 5 Marina Car Parking
- 6 Emergency Exit
- 7 Garbage Segregation Points
- 8 Pump-Out Station
- 9 Assembly Point
- 10 Hazard Segregation Point
- 11 Navigation Buoy





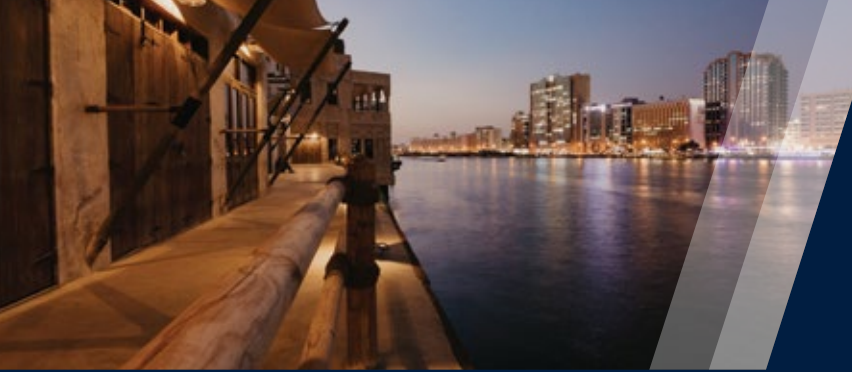
# Al Seef

***D-Marin I Al Seef marina is ideal for yacht owners looking for a bustling waterfront promenade with rich heritage and contemporary areas that invite visitors to rediscover the heart of Dubai.***

D-Marin I Al Seef marina an exclusive quay sits in old Dubai, a vibrant space where Dubai's heritage and culture meets. This family-friendly lifestyle destination creates a blend between the past and today, and the perfect place to explore,

shop, dine, relax, and stay with a backdrop of the iconic creek. The marina is 15 minutes away from Dubai International Airport and 20 minutes away from Downtown Dubai.





### MUST-SEE

City Walk, the urban lifestyle destination by Meraas, is a popular family-friendly neighbourhood with a sophisticated ambience and a unique mix of residences, high-end retail, dining, entertainment, hospitality, grooming and wellness options.

Set against the fresh blue waters of the Arabian Gulf, The Beach at JBR embodies urban living at its sunny best – the latest entertainment, delicious cuisine, water sports, a 600 m running track, a fully equipped outdoor gym that offers classes and some of the city’s best and most unique shops – you really can have it all.

With an exclusive selection of premium residences, retail, dining, and leisure and entertainment experiences, Bluewaters is a modern, family-oriented island destination with a pioneering spirit that blends waterfront living with the exhilaration of urban city life.



## Things To Do & Facilities

Al Seef is one of Dubai’s most popular leisure districts, situated directly on the bustling Dubai Creek. The popular destination offers a charming atmosphere that pays homage to the UAE’s distinct heritage.

### Al Seef Heritage Souk

Al Seef Heritage Souq offers a wide variety of traditional handicrafts, home décor, souvenirs, accessories, jewellery and much more by regional craftsmen, taking visitors back in time to relive the unique story of Dubai and the Creek.

### Museum of Illusions

The Museum of Illusions in Dubai takes you on a social and entertaining journey into a magical realm which delights all generations.

# Capacities & Services

### BERTHING

Berthing capacity: 68 berths for yachts up to 50 m 6 m draft

### GENERAL SERVICES

- 24/7 Dockhand assistance
- 24/7 Buggy transfer
- Marina office assistance from 8:00 am to 8:00 pm
- Sailing permit arrangements
- Navigation warning updates
- Nearby fuel station (less than half a nautical mile)
- Individual dock box
- Ice delivery
- Recovery services
- Boat shipyard facility (up to 50T) at 2.5 NM, (more than 50T) DMC at 6 NM
- Mobile charging boxes
- ATM machines
- Car Park & Valet Parking
- Nearby hotels, restaurants and retail shops and more

### SECURITY SERVICES

24/7 Security and CCTV

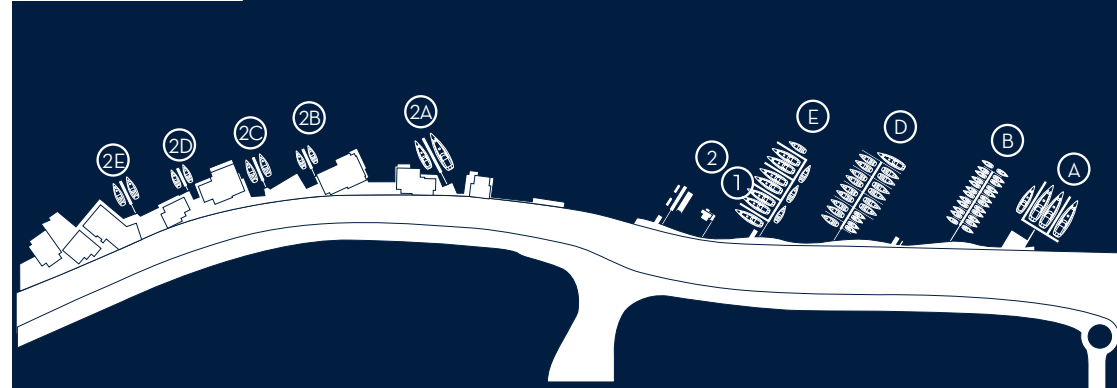
### TECHNICAL SERVICES

Black & grey water pump out

### ENVIRONMENTAL CLEANING SERVICES

Used oil collection & disposal  
Waste collection & disposal

- 1 Marina Office
- 2 Water Taxi
- A-E Pontoons
- 2A-2E Pontoons





# Business Bay

***D-Marin | Business Bay is the first leisure yacht marina on the Dubai Canal. Linking the Creek with the Jumeirah coastline, D-Marin | Business Bay provides calm city cruising.***

Located in the heart of the city nearby to Downtown Dubai, the marina boasts iconic views of Burj Khalifa and Business Bay. The journey to open sea is a short 30-minute cruise, surrounded by remarkable

architecture and a breathtaking waterfall bridge. The marina is also close to major highways and metro stations which provides easy access around the city, with Dubai International Airport 20 minutes away.





## Things To Do & Facilities

Explore a place where high-rises touch the sky and entertainment never stops. The name may speak to suits and ties, but when it comes to neighbourhoods, Business Bay is as vibrant as they come. An idyllic mini-metropolis brought to life, this is the place to see and be seen.

Winding through Business Bay is the Dubai Water Canal, a manmade channel that links Old Dubai to the Arabian Gulf. Its promenade, lined by exciting eateries, trendy lounges and luxury hotels, awards the perfect frame for this urban jungle's noteworthy architecture, with each high-rise vying for attention.



### MUST-SEE

#### Burj Khalifa

Gaze at the city skyline from the world's tallest tower and a global icon Burj Khalifa. Truly a feat of engineering, the building represents the conceptual heart and soul of the city of Dubai.

#### The Dubai Fountain

A captivating water, music and light spectacle in Downtown Dubai, The Dubai Fountain is the world's tallest performing fountain

#### Dubai Mall

Dubai Mall is the world's largest destination for shopping, entertainment and leisure, located next to the world's tallest building, the Burj Khalifa. Featuring over 1,200 retail stores, two major department stores and hundreds of food and beverage outlets, Dubai Mall covers more than 1 million sqm - an area equivalent to 200 football pitches.

## Capacities & Services

### BERTHING

Berthing capacity: 157 Berths for yachts up to 35 m  
5 m draft

### GENERAL SERVICES

24/7 Marina Services  
24/7 Sailing permit arrangements  
24/7 Navigation warning updates  
24/7 Dockhand assistance  
24/7 Buggy transfer  
Dock Cart facility  
Exterior wash down for boats up to 10 m  
(not deep cleaning)  
Car Park  
Charter yacht pick up/drop off  
Ice available for berth holders

### TECHNICAL SERVICES

Black & grey water pump out  
Wide range of power available for yachts: from 32  
Amp single phase to 160 Amp three phase (berth  
dependent)

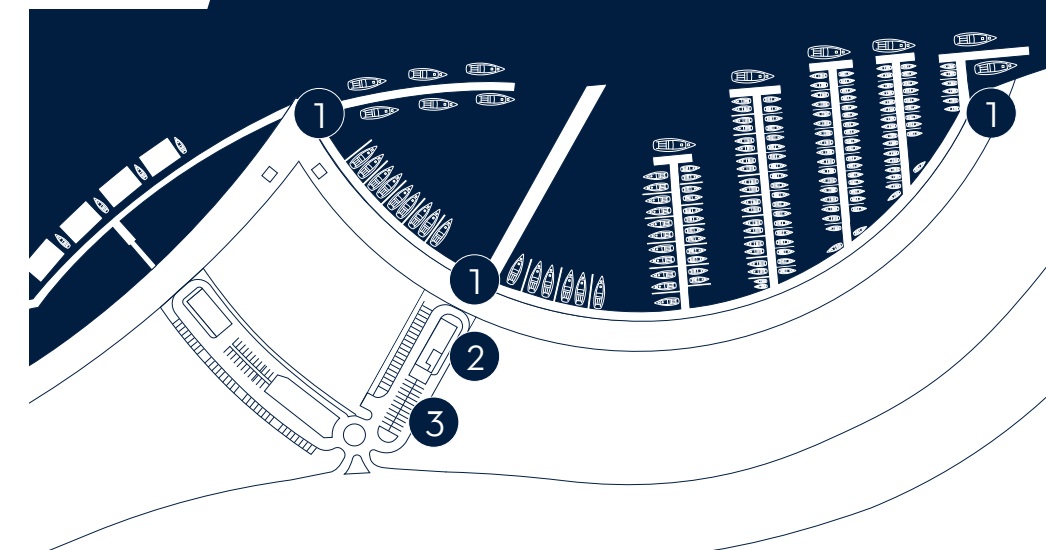
### SECURITY SERVICES

24/7 Security and CCTV

### ENVIRONMENTAL CLEANING SERVICES

Garbage removal  
Waste collection & disposal

- 1 Entrance/Exit or Marina Access
- 2 Marina Office
- 3 Marina Members Carpark







# Jaddaf Waterfront

***D-Marin I Jaddaf Waterfront is sheltered in a quiet west-side neighbourhood located at the foot of Dubai's world-renowned Palazzo Versace Hotel.***

Jaddaf Waterfront is an easy stroll away from Jameel Arts Center, a renowned contemporary art gallery, and the Jaddaf Waterfront Sculpture Park which is UAE's first open-air art and sculpture park.

The Marina is close to major city activities such as Festival City, and only 15 minutes from Downtown Dubai and 5 minutes away from Dubai International Airport.





### MUST-SEE

Delight in the Dubai Gold Souk, a bustling maze with stalls selling handcrafted jewelry made with precious stones, metals and, of course, an abundance of gold; it's Dubai's most visited market.

## Things To Do & Facilities

Feel like a local at the Sheikh Mohammed Centre for Cultural Understanding. Sign up for a tour and learn about local culture over Arabic tea or coffee and dates, sampling treats like chabab, cardamom pancakes.

Marvel at Dubai's Jumeirah Mosque, holding up to 1200 people. Take in its white stone exteriors lined with date palm trees and tour the interiors to learn about Islamic culture from local guides.



# Capacities & Services

**BERTHING**  
Berthing capacity: 62 berths for yachts up to 30 m  
6.5 m draft

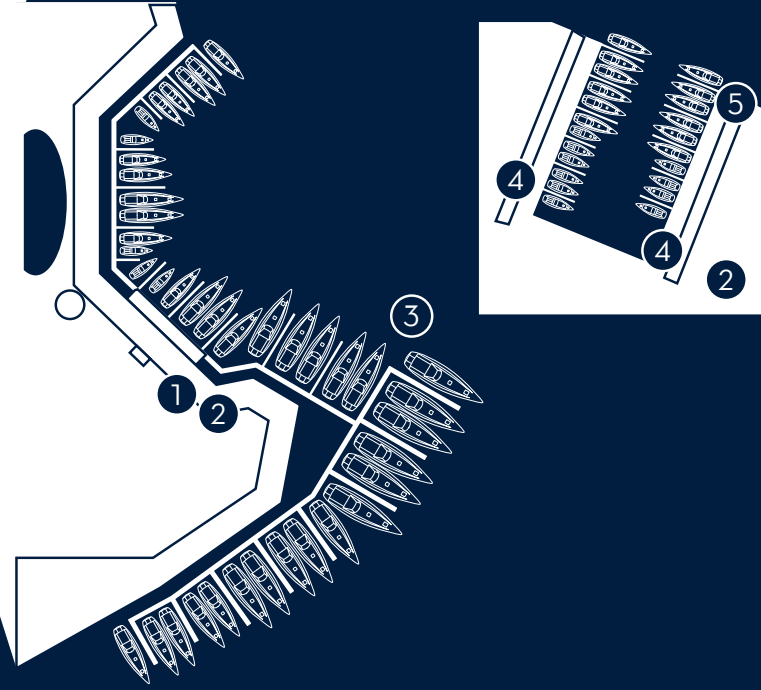
**GENERAL SERVICES**  
Marina services from 7:00 am to 10.30 pm  
Dockhand assistance from 7:00 am to 10.30 pm  
Sailing permit arrangements  
Regular navigation warning updates  
Dock cart facility  
Buggy Service  
Exterior wash down for boats up to 10 m (not deep cleaning)  
Nearby restaurants, bar and hotel

**TECHNICAL SERVICES**  
Black & grey water pump out

**SECURITY SERVICES**  
24/7 Security

**ENVIRONMENTAL CLEANING SERVICES**  
Waste collection & disposal

- 1 Office
- 2 W.C.
- 3 Pump Out Station
- 4 Entrance
- 5 Black Water Pump Out





## Happy Berth Days

Discover the most beautiful coastlines of D-Marin World  
with 7 days free berthing and 40% discount up to 4 months.

Turgutreis | Didim | Göcek **TÜRKİYE** • Borik | Dalmacija | Mandalina | Tribunj **CROATIA**  
 Gouvia | Lefkas | Zea | Pylos **GREECE** • Del Este | Duquesa | Estepona **SPAIN**  
 Punta Faro | Marina Di Varazze | Marina Di Livorno | Marina Di San Lorenzo | Marina Degli Aregai **ITALY**  
 Marina Di Valletta **MALTA** • Vlora Marina **ALBANIA** • Portonovi **MONTENEGRO**  
 Business Bay | Jaddaf Waterfront | Al Seef | Marsa Al Arab **U.A.E.**

*D Marin*